



SERVO DRIVE  
MOTORIZATIONS

ENERGY  
SAVING

INDUSTRY 4.0  
READY



REMOTE  
SERVICE

MADE IN ITALY

LABEL INSPECTION,  
FINISHING AND  
CONVERTING SOLUTIONS

# ORTLES

inspection slitter rewriter for  
SA labels and unsupported film

## Standard features:

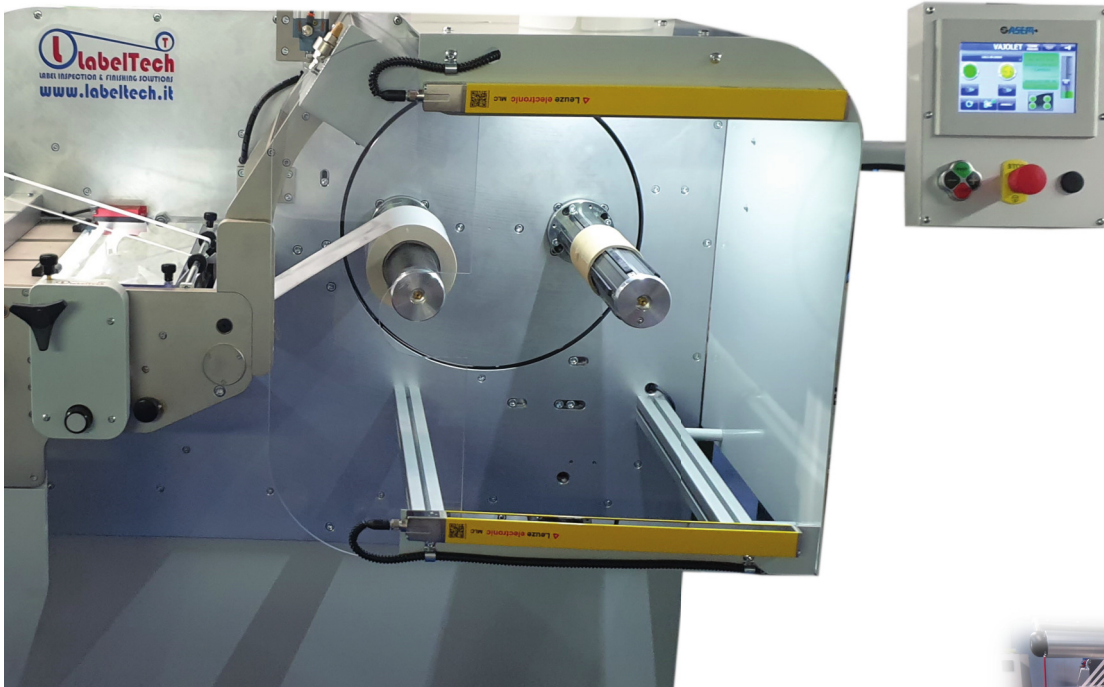
- BOSCH REXROTH electronics, servo drive motors on nip roll and rewinders
- Rewinding speed up to 350m/min
- rewinding with independent face on/face off
- 2 speeds bi-directional Jog
- Energy recovery from unwinder braking for a consistent energy saving
- Suitable for any kind of materials, from SA to AL and packaging films
- Storable job recipes with quick recall by name, customer and favourites
- display 10.4" color touch screen with step by step instructions
- Stop production with label counter, length and final diameter
- Automatic stop at unwinder end of roll
- Remote service and "live" work supervision for quick problem solving
- web guide with ultrasound sensor suitable for any kind substrates
- 2 in 1 slitting system, to pass from rotary to razor sitters in few seconds and calculation tool for quick slitters positioning
- Available web width: 330mm, 430mm and 530mm



*ORTLES 430 with dual rewriter, waste rewriter and quality inspection camera*

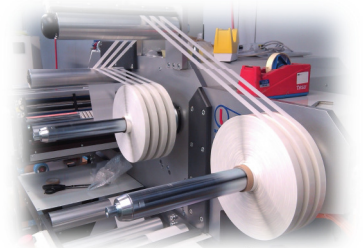


VAJOLET: semi automatic turret rewriter

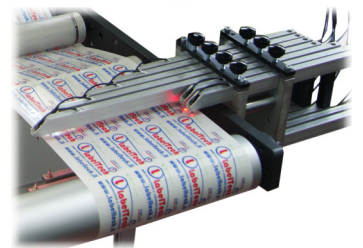


## Main optionals:

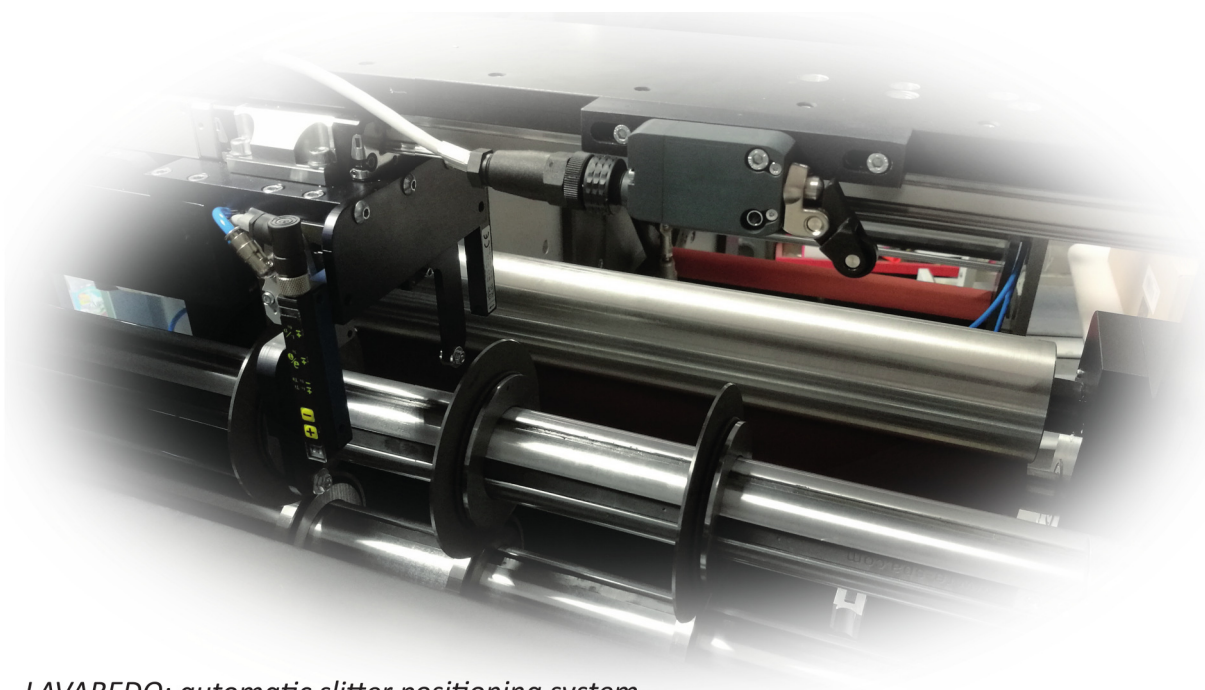
- Dual rewriter
- VAJOLET semi automatic turret rewriter with end of roll cut
- LAVAREDO automatic slitter positioning system for both rotary and razor slitters
- FURU MMLD inspection system
- 100% inspection systems and ink jet printers interface
- Matrix and waste rewriter with inverter motorization
- Electronic servo EIGER die cut to register unit
- Lateral waste trim extractors motorized or pneumatic
- From 0,5" to 6" pneumatic mandrels
- Roll lifter , manual or electric with several accesories



Dual rewriter



FURU: missing label,  
matrix/splice detection



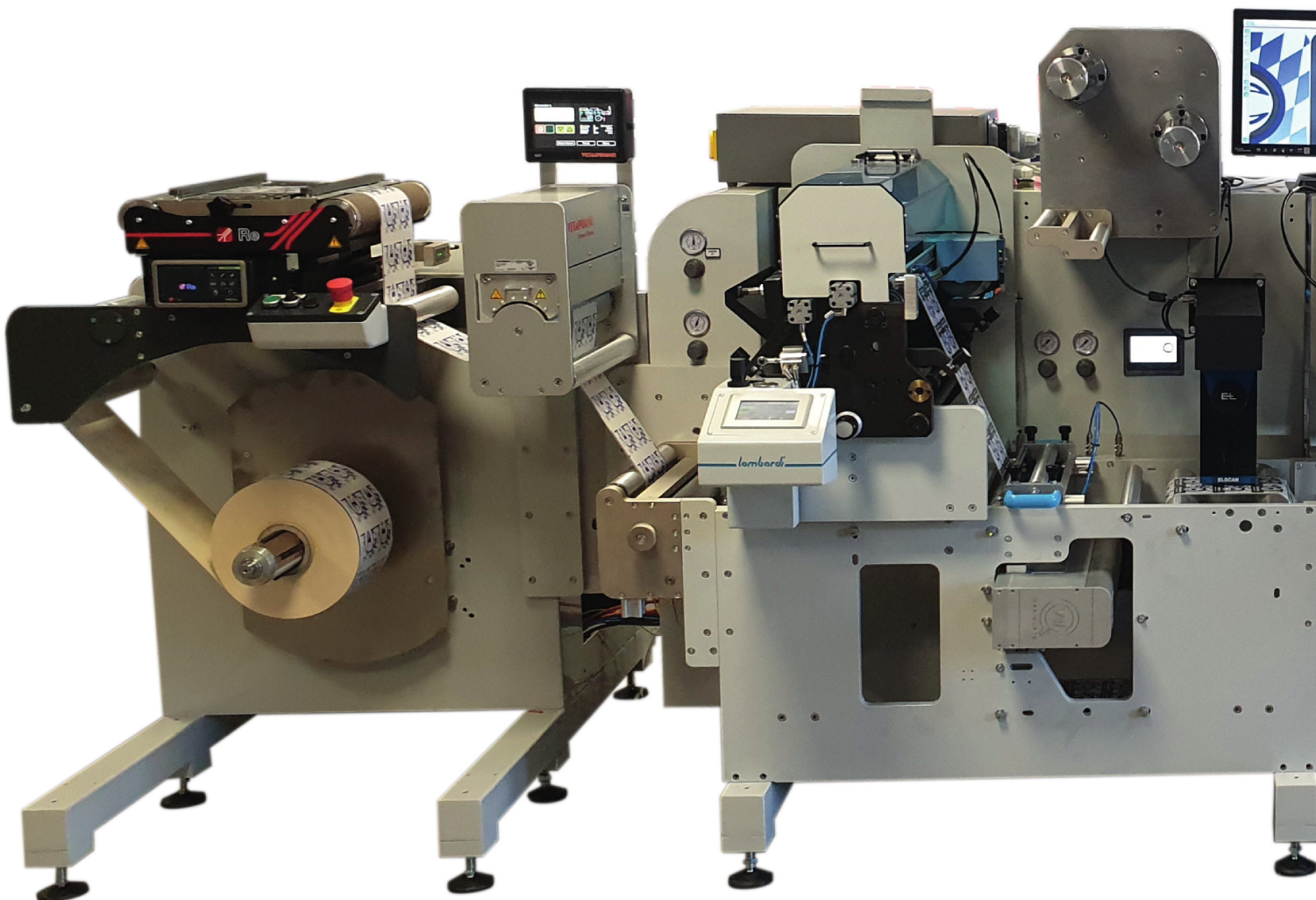
LAVAREDO: automatic slitter positioning system

# STELVIO modular converting machine

## Standard features:

- BOSCH REXROTH electronics, servo drive motors
- 800mm unwinder roll with braking energy recovery, for a consistent energy saving
- web guide + movable splicing table with pneumatic clamps
- mechanical speed up to 150m/min
- 12.4" color touch screen with step by step instructions
- Storable job recipes with quick recall by name, customer and favourites
- Database connection for data loading and supervision
- Stop production with label counter, length, final diameter/sheet number
- Automatic stop at unwinder end of roll
- Remote service for quick problem solving
- Available web width: 330mm and 430mm

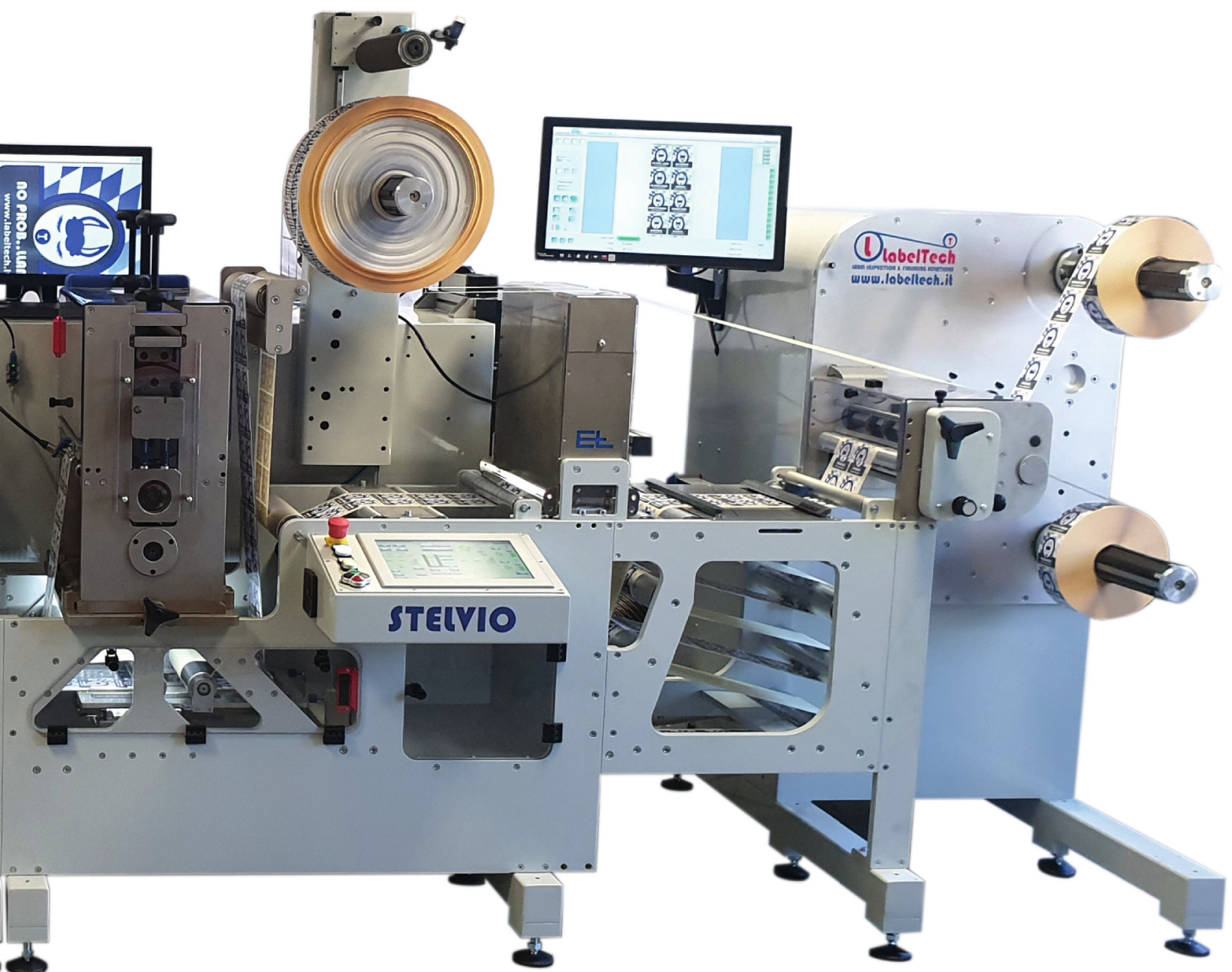
*STELVIO with corona threatment, flexo unit, cold foil, register control camera, semi rotary die cut, 100% inspection system, rotary slitting and dual rewinder*





## Available units and optionals:

- Full rotary die cut to register, lateral correction +/- 15mm
- Semi rotary die cut module
- Servo driven matrix rewriter with diameter sensor and matrix broken detection
- Anvil fine adjust with pressure gauge indicators
- Flexo unit for varnish and spot varnish to register, 3 servo motors and sleeve system for print and anilox. Electronic pressure regulation. Dedicated 7" touch screen
- Cold foil and lamination
- Register control camera
- Ink jet marker for variable data front/back
- 2 in 1 slitting system, to pass from rotary to razor slitters in few seconds
- LAVAREDO automatic slitter positioning system for both rotary and razor slitters
- Dual rewriter with independent servo driven motorization
- VAJOLET semi automatic turret rewriter with end of roll cut



# REIT

## Doctoring rewinder

### Main features:

- 400mm servo driven unwinder and rewinder,
- face in-face out unwinding and rewinding
- Servo drive pneumatic nip roll
- ultrasonic label counter
- available size 260-330mm
- backlighted 500mm vision place
- max speed 200m/min

### Available optionals:

- Register control camera
- mark distance sensor
- Ink jet marker for variable data front/back
- razor slitting unit
- 600mm unwinder-rewinder
- missing label (max 2 rows)



*REIT doctoring rewinder with 2 web guides and inspection camera*



# SCILIAR

## bidirectional horizontal rewinder

### Main features:

- BOSCH REXROTH electronics, servo drive motors on nip roll and rewinders
- Rewinding speed up to 200m/min
- Bi- directional rewinding with independent face on/face off
- Energy recovery from unwinder braking for a consistent energy saving
- Suitable for any kind of materials, from SA to AL and packaging films
- Storable job recipes with quick recall by name, customer and favourites
- display 7" color touch screen with step by step instructions
- Stop production with label counter, length and final diameter
- Automatic stop at unwinder end of roll
- Remote service and "live" work supervision for quick problem solving
- Adjustable height from 80 to 120 cm
- adjustable splice table with pneumatic clamps
- pneumatic nip roll with silicon coating
- ultrasound label counter, suitable for any kind of supported materials
- interchangeable air shafts with touch panel command
- Available web width: 260mm



SCILIAR basic version

Labeltech sas di Gabriele D'Onofrio & C.  
via per Turbigo 17  
20022 Castano Primo (MI)  
Italy

[www.labeltech.it](http://www.labeltech.it)



+39 0331 882289



[info@labeltech.it](mailto:info@labeltech.it)



PRODUCT  
BROCHURE  
2309EN  
SEPTEMBER 2023